



2065 Leavitt Bucktown

- ▶ 3 Apt Residences April/May '15
- ▶ Gut Rehab 2b2b+DEN Units
- ▶ Steps to Damen Shops
- ▶ Open Plan Duplex Units
- ▶ White Quartz, SS Appliances
- ▶ Subway Baths
- ▶ Private Decks
- ▶ Skyline Views
- ▶ Wood Floors
- ▶ From \$3000/mo
- ▶ www.blackwatch68.com



2065 North Leavitt

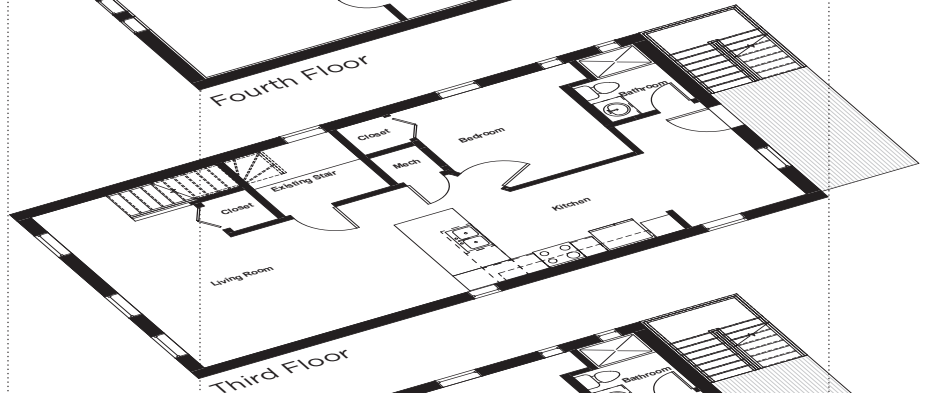
UNIT 3

2 Bed & Den / 2 Bath Penthouse Duplex



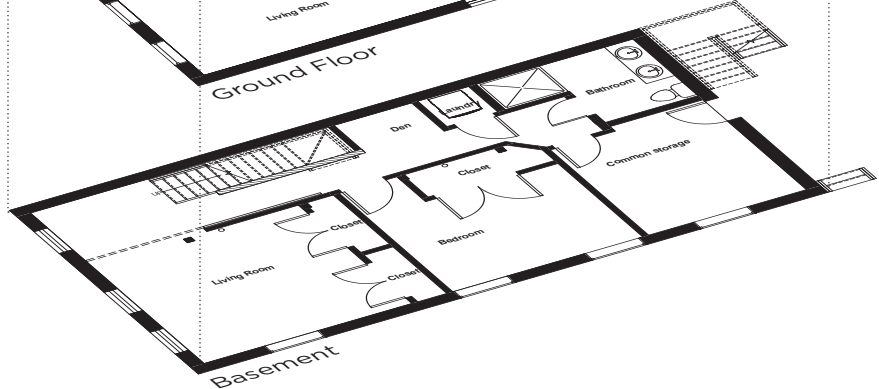
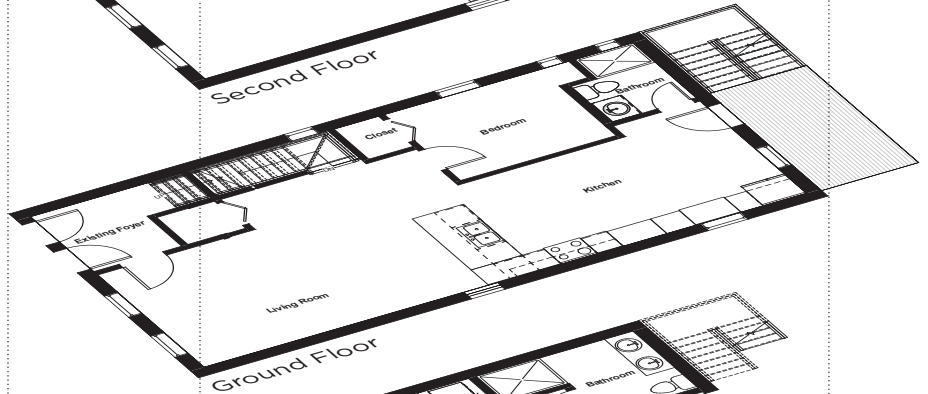
UNIT 2

2 Bed / 1 Bath Simplex



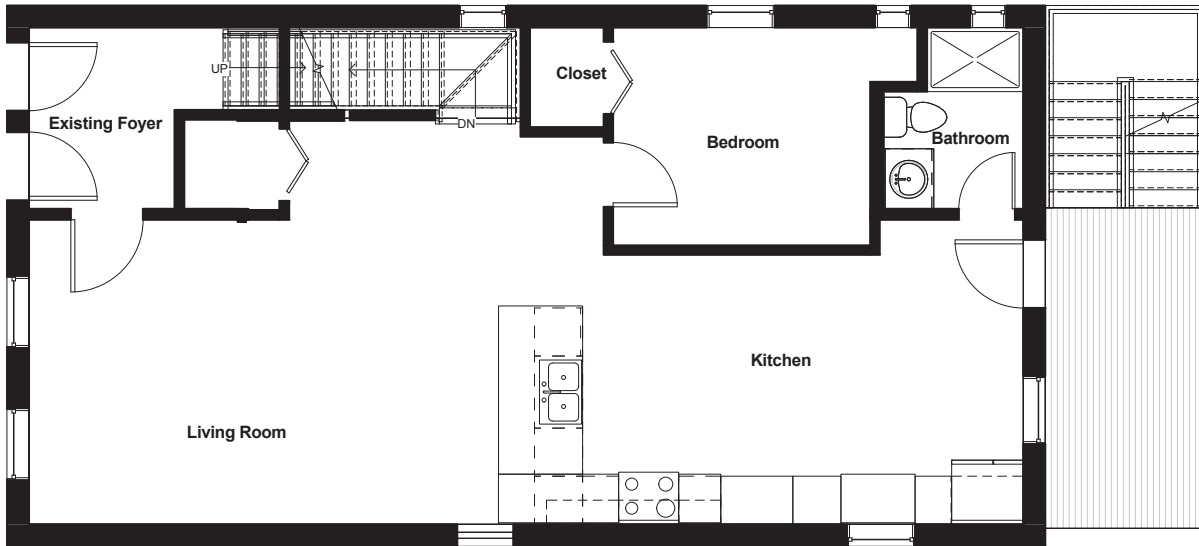
UNIT 1

2 Bed & Den / 2 Bath Duplex



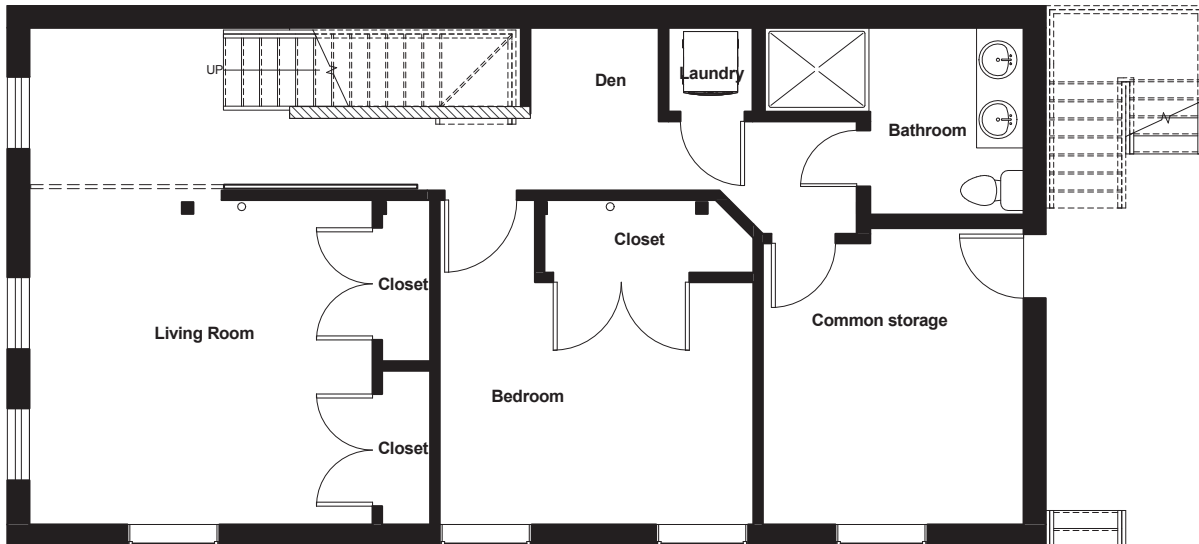
The policy of continual improvement practiced by **Blackwatch '68™** in construction and design dictates that all specifications, equipment, dimensions, layouts and prices are subject to change without notice. Square footages and dimensions are approximate and are not inclusive of terrace areas. Floor plans are provided for layout and suggest furniture placement only.

2065 North Leavitt



UNIT 1 : ENTRY LEVEL

3 Bed / 2 Bath Duplex



UNIT 1 : LOWER LEVEL

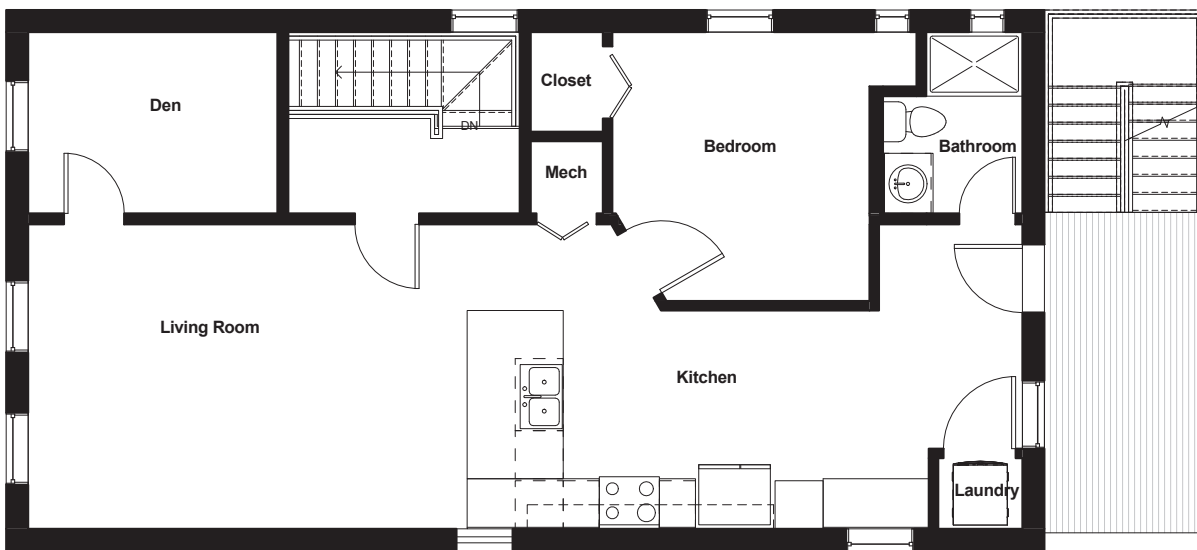
3 Bed / 2 Bath Duplex

The policy of continual improvement practiced by **Blackwatch '68™** in construction and design dictates that all specifications, equipment, dimensions, layouts and prices are subject to change without notice. Square footages and dimensions are approximate and are not inclusive of terrace areas. Floor plans are provided for layout and suggest furniture placement only.

Blackwatch '68
PROPERTIES

blackwatch68.com

2065 North Leavitt



UNIT 2

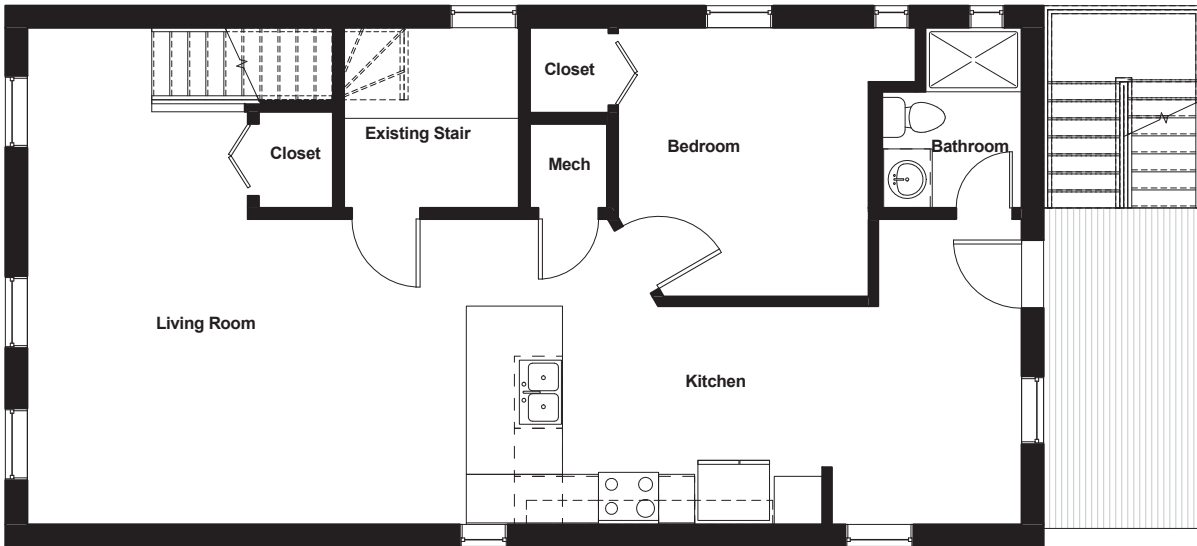
2 Bed / 1 Bath Simplex

The policy of continual improvement practiced by **Blackwatch '68**[™] in construction and design dictates that all specifications, equipment, dimensions, layouts and prices are subject to change without notice. Square footages and dimensions are approximate and are not inclusive of terrace areas. Floor plans are provided for layout and suggest furniture placement only.

Blackwatch '68
PROPERTIES

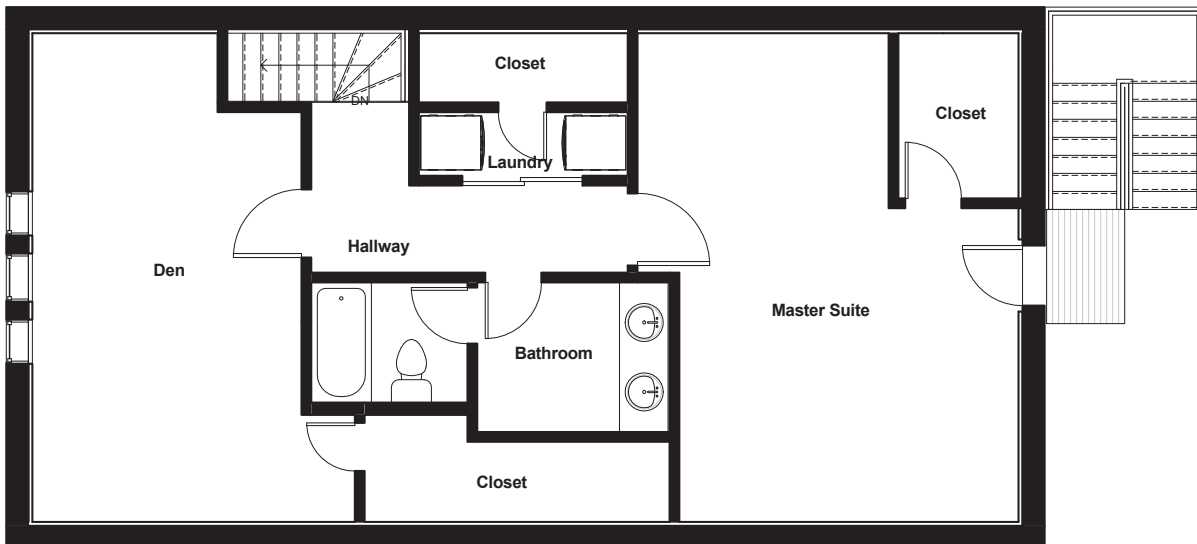
blackwatch68.com

2065 North Leavitt



UNIT 3 : ENTRY LEVEL

3 Bed / 2 Bath Penthouse Duplex



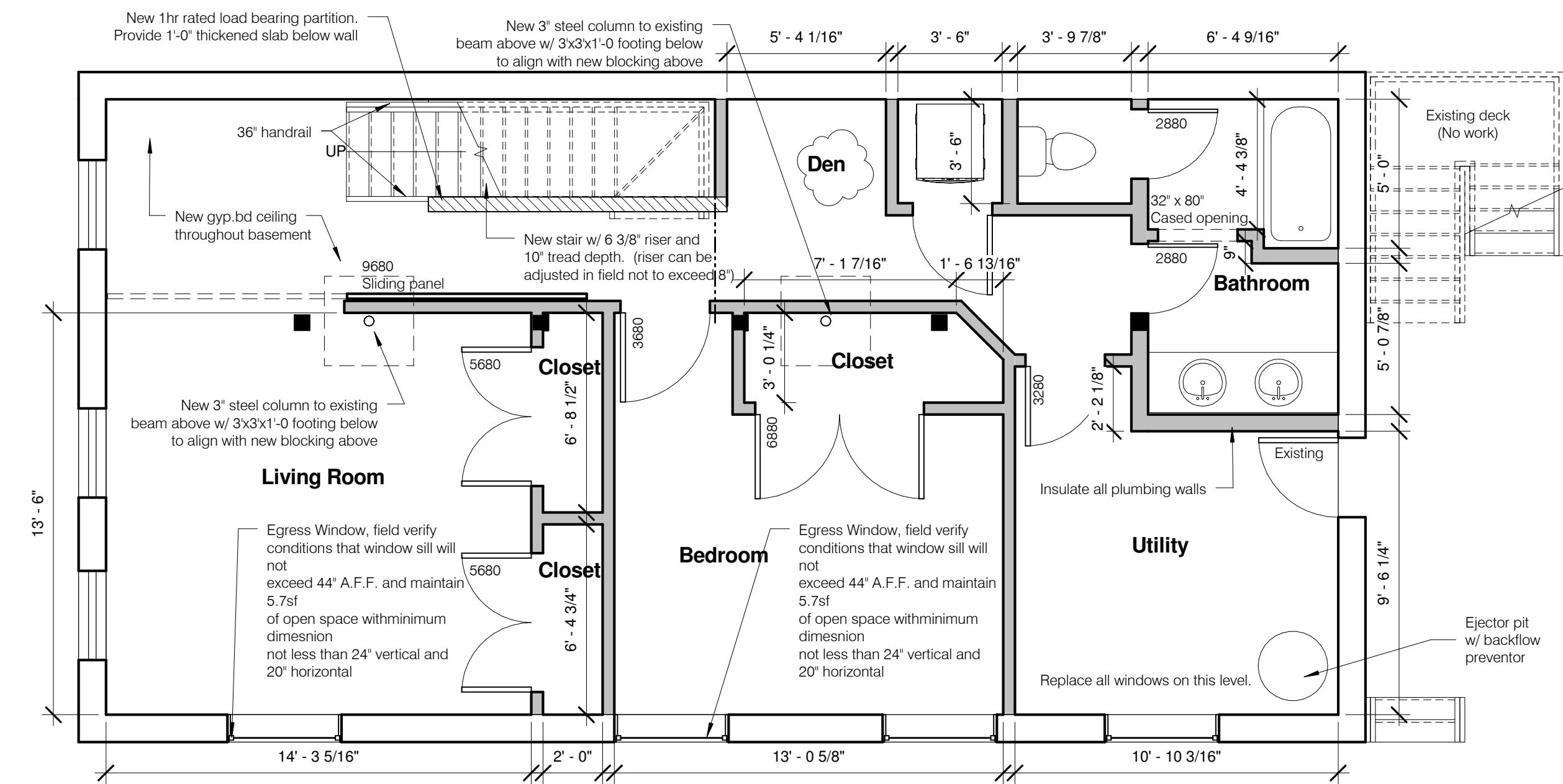
UNIT 3 : UPPER LEVEL

3 Bed / 2 Bath Penthouse Duplex

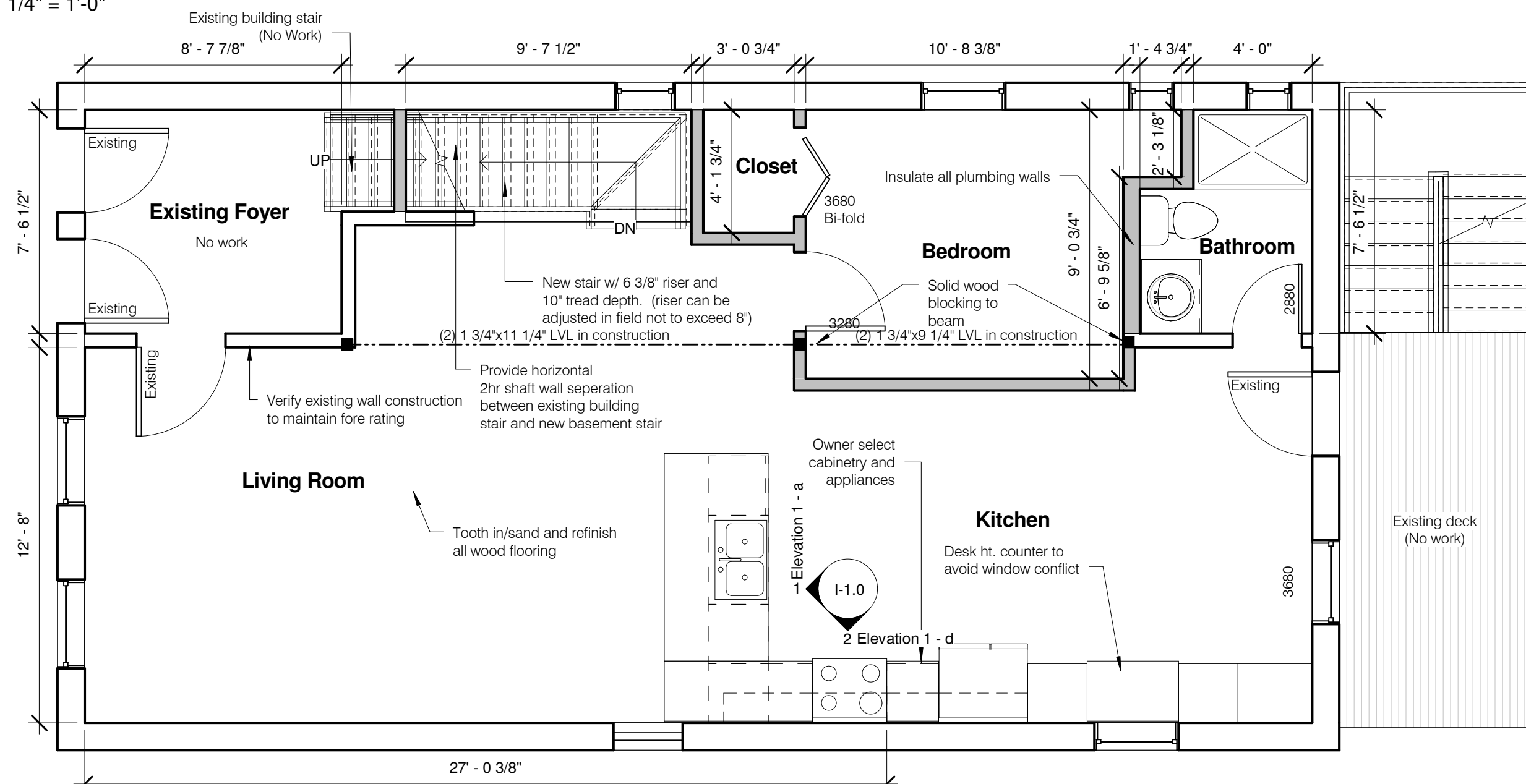
The policy of continual improvement practiced by **Blackwatch '68™** in construction and design dictates that all specifications, equipment, dimensions, layouts and prices are subject to change without notice. Square footages and dimensions are approximate and are not inclusive of terrace areas. Floor plans are provided for layout and suggest furniture placement only.

Blackwatch '68
PROPERTIES

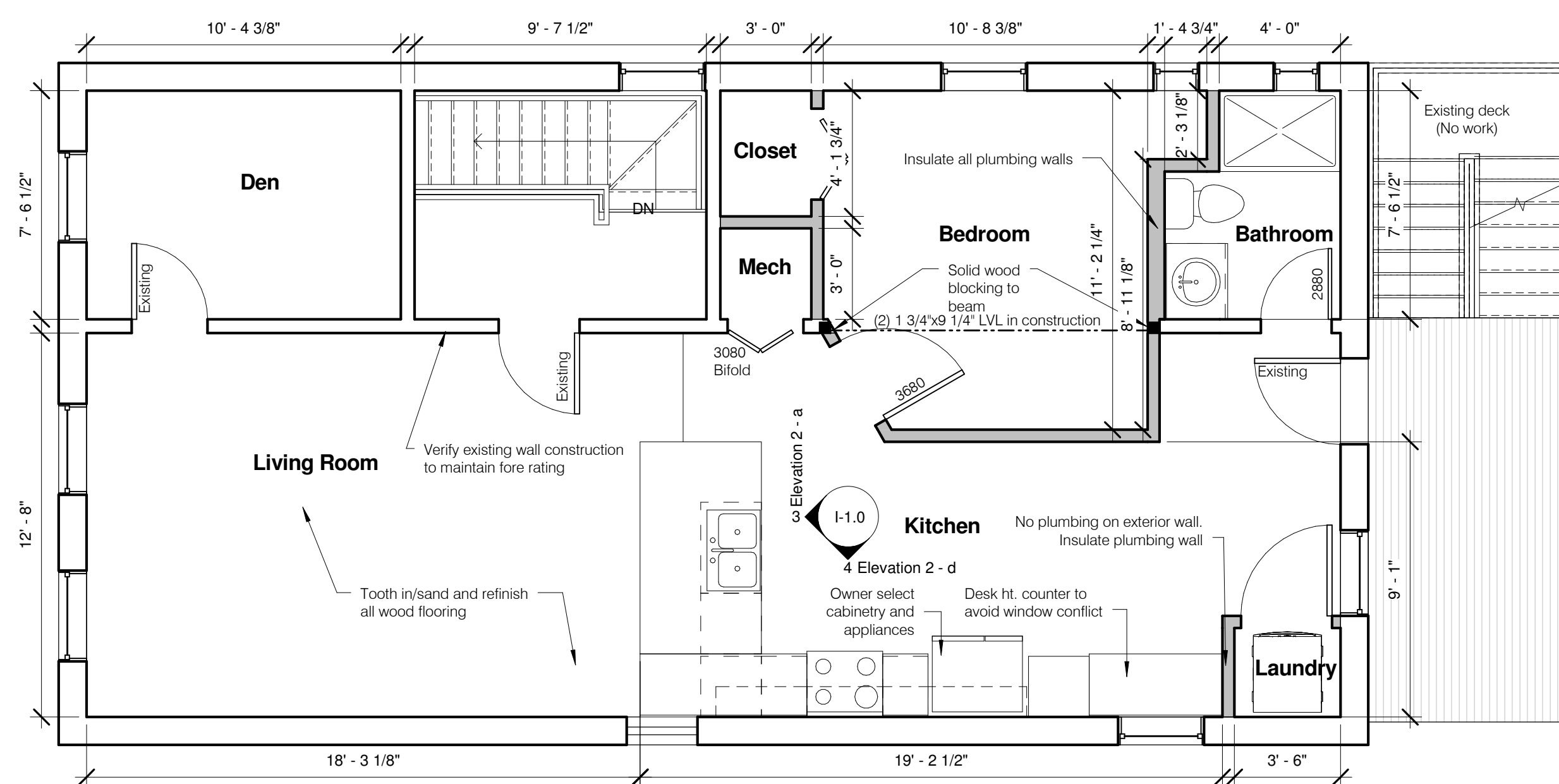
blackwatch68.com



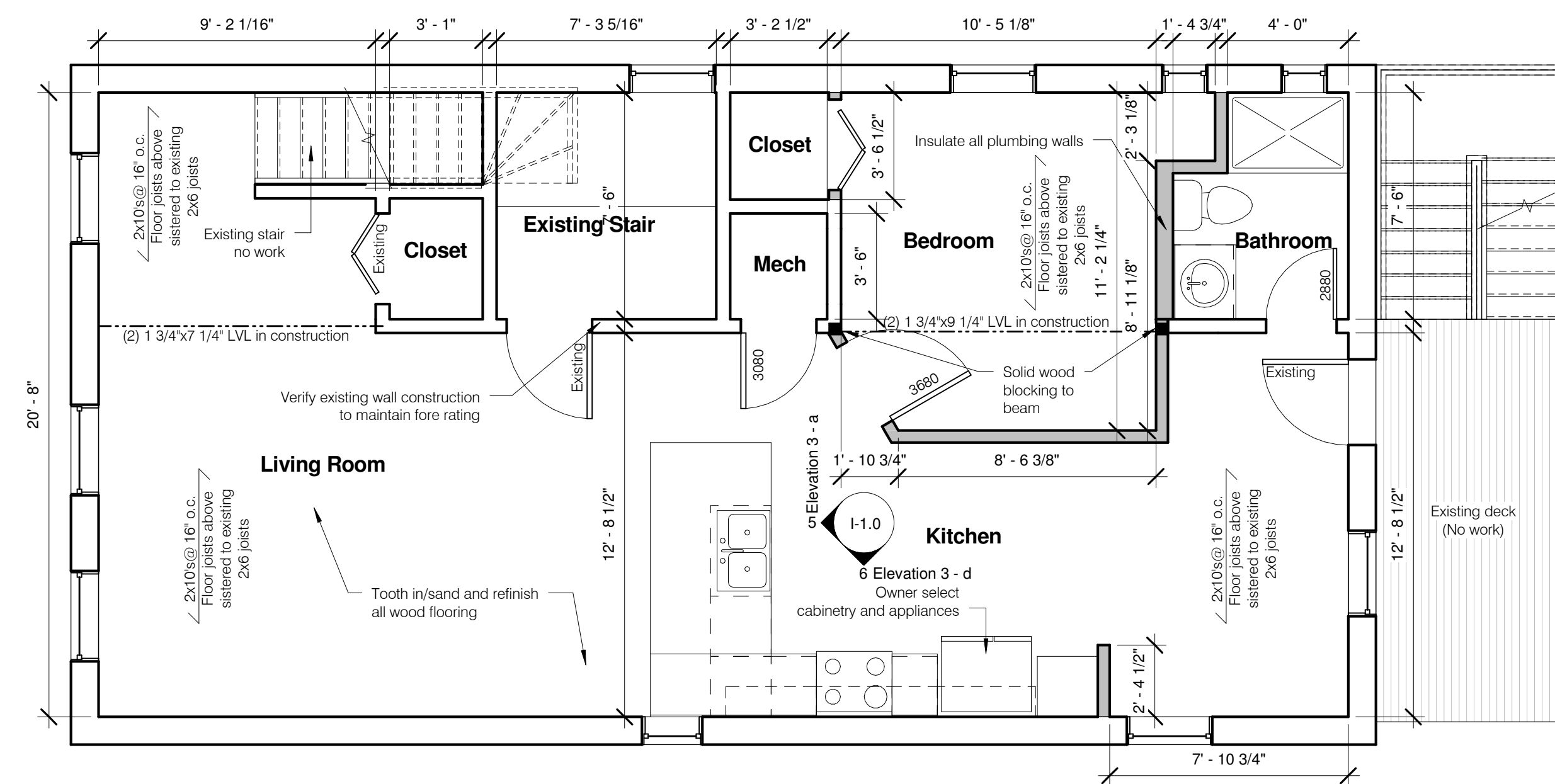
1 Proposed Basement
1/4" = 1'-0"



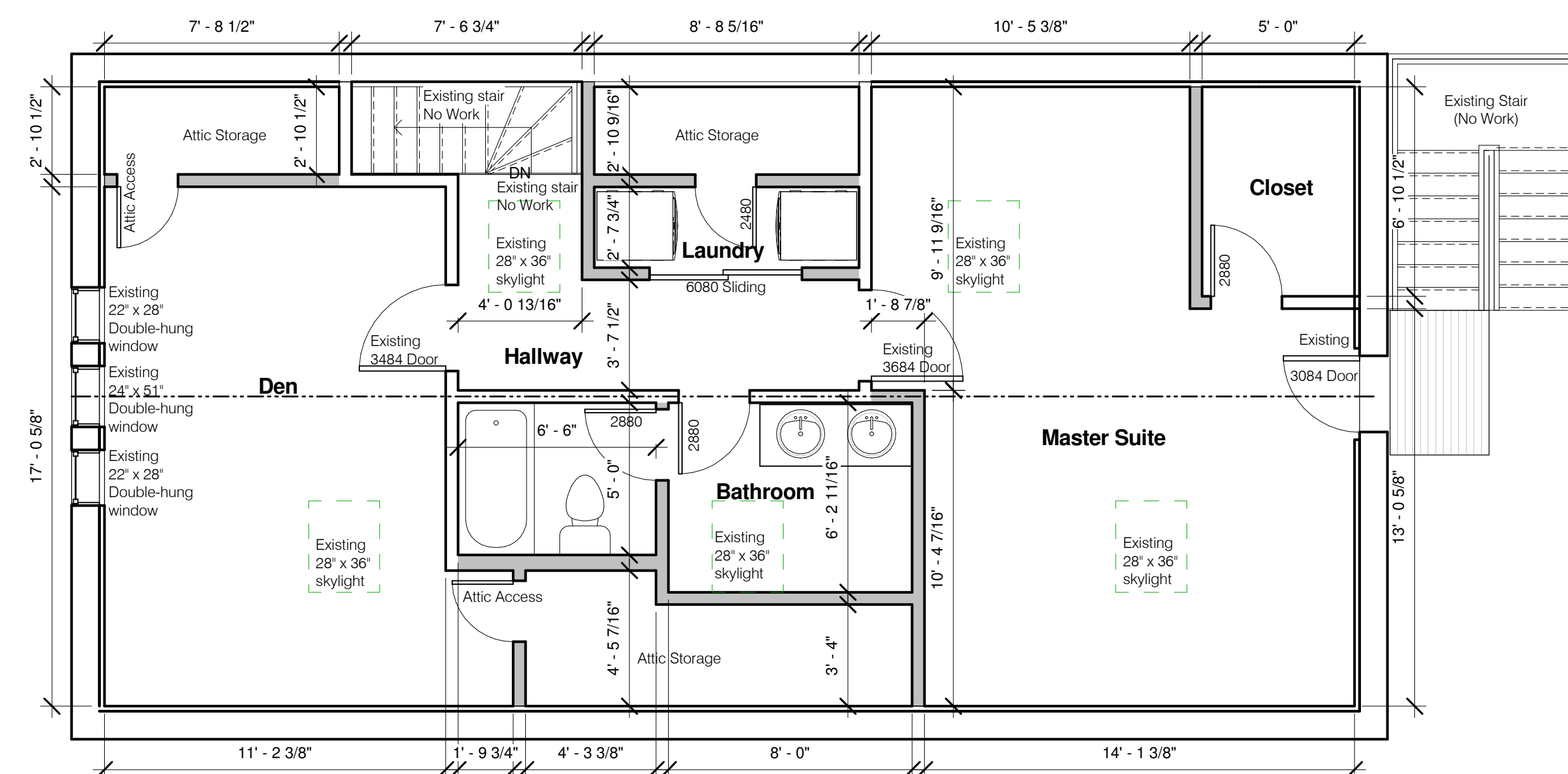
2 Proposed First Floor
1/4" = 1'-0"



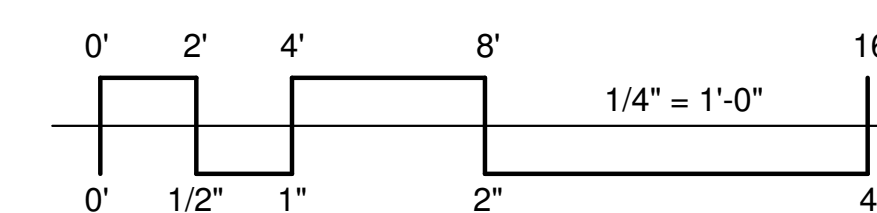
3 Proposed Second Floor
1/4" = 1'-0"



4 Proposed Third Floor
1/4" = 1'-0"

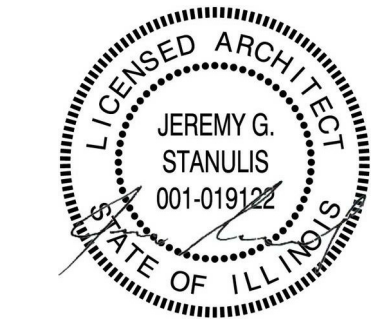


5 Proposed Attic
1/4" = 1'-0"



ARCHITECT:
J Stanulis Architects
 125 West 61st Street
 Westmont, IL 60559
 Ph: 773.203.4544
 Fx: 630.390.2282
 jeremy@jstanulis.com

DATE:	DESCRIPTION:
10/25/13	ISSUE FOR PERMIT
01/15/14	ZONING COMMENTS
03/11/14	ZONING COMMENTS
11/26/14	CHECK SET
12/23/14	ZONING REVISIONS 1



Owner:
 Elan Peltz

PROJECT DESCRIPTION:
 2065 N Leavitt St
 Chicago, IL 60647

SHEET TITLE:
 Proposed Floor Plans

SCALE: As indicated
 SHEET:

A-2.0