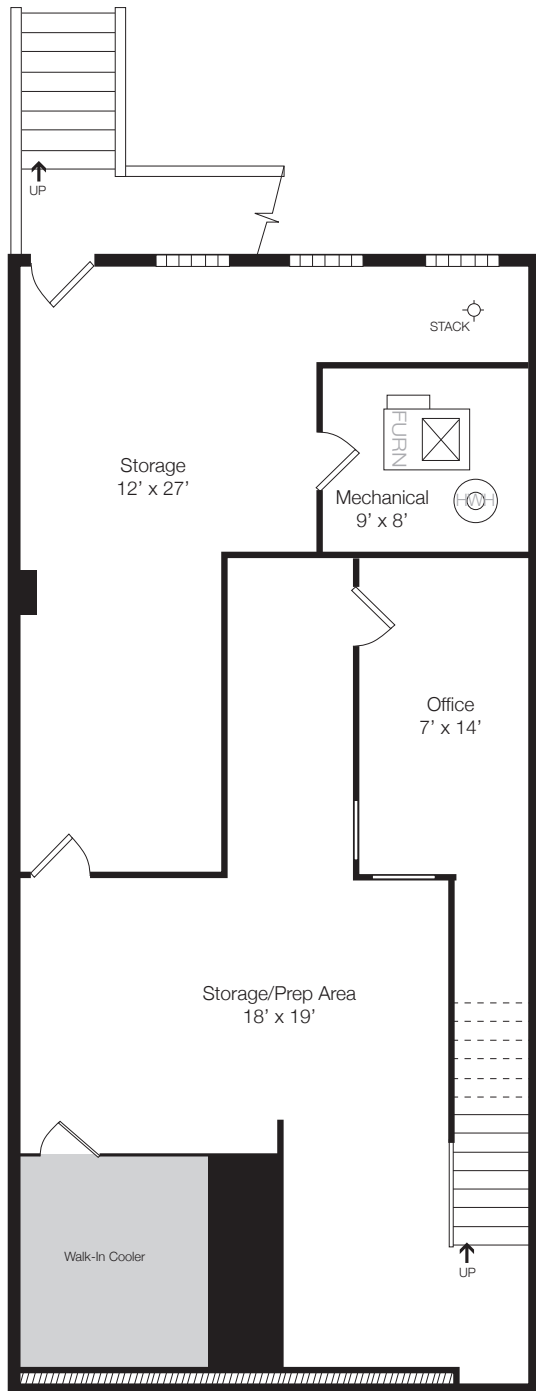


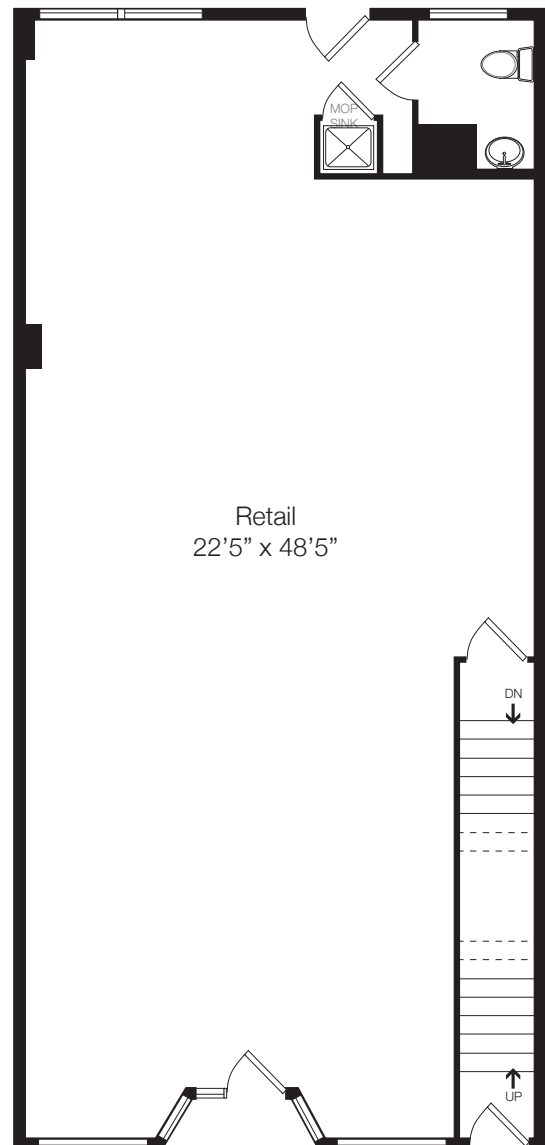
2211 West North Avenue

COMMERCIAL STOREFRONT



BASEMENT

Storage + Walk-in Cellar



FIRST FLOOR STOREFRONT

Prime Retail Location

The policy of continual improvement practiced by **Blackwatch '68™** in construction and design dictates that all specifications, equipment, dimensions, layouts and prices are subject to change without notice. Square footages and dimensions are approximate and are not inclusive of terrace areas. Floor plans are provided for layout and suggest furniture placement only.

Blackwatch '68
PROPERTIES

blackwatch68.com