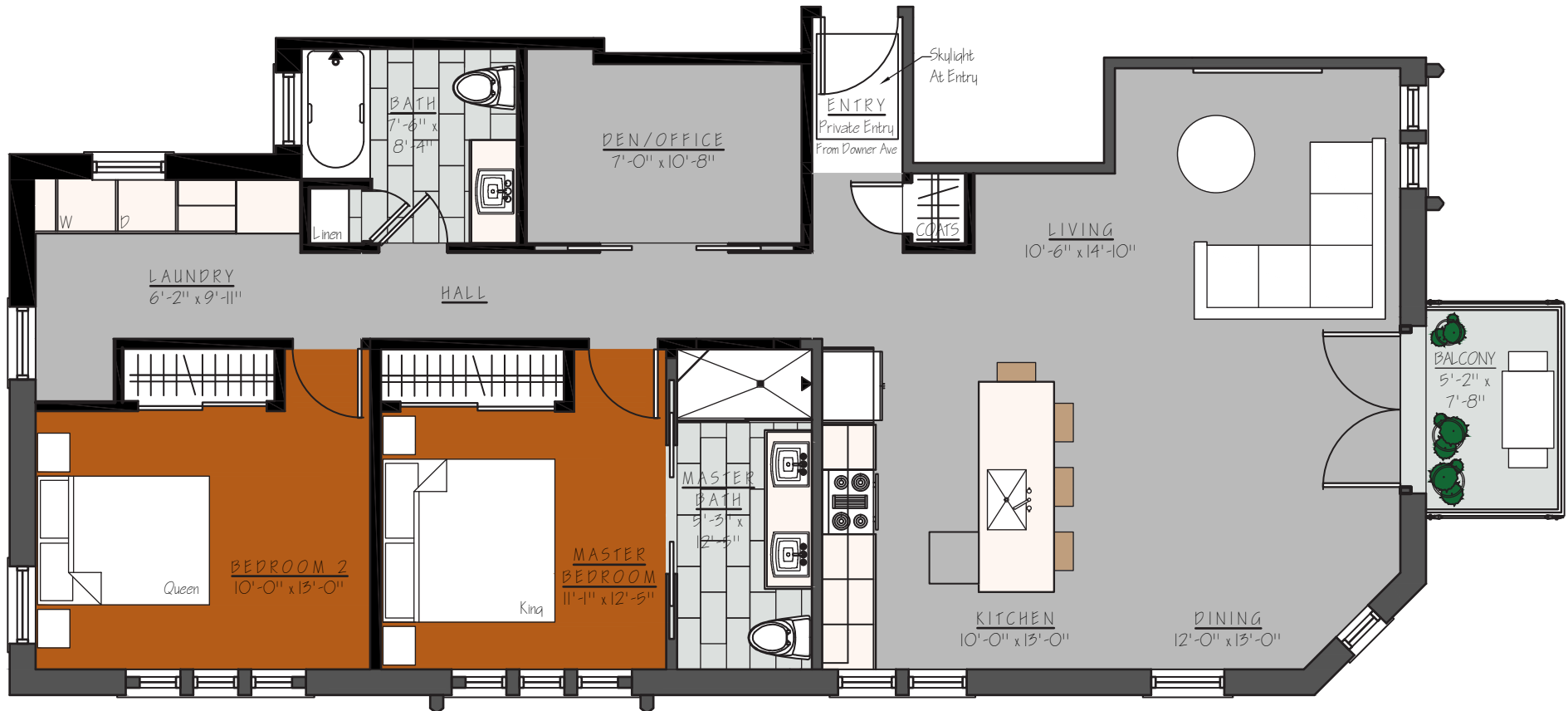


# 4003 N. Downer, Unit A - South Corner

1,500 GSF

2 Bedroom, 2 Bathroom + Office



The policy of continual improvement practiced by **Blackwatch '68™** in construction and design dictates that all specifications, equipment, dimensions, layouts and prices are subject to change without notice. Square footages and dimensions are approximate and are not inclusive of terrace areas. Floor plans are provided for layout and suggest furniture placement only.

**Blackwatch '68**  
PROPERTIES

[blackwatch68.com](http://blackwatch68.com)

# 4003 N. Downer, Unit A - South Corner

1,500 GSF

2 Bedroom, 2 Bathroom + Office



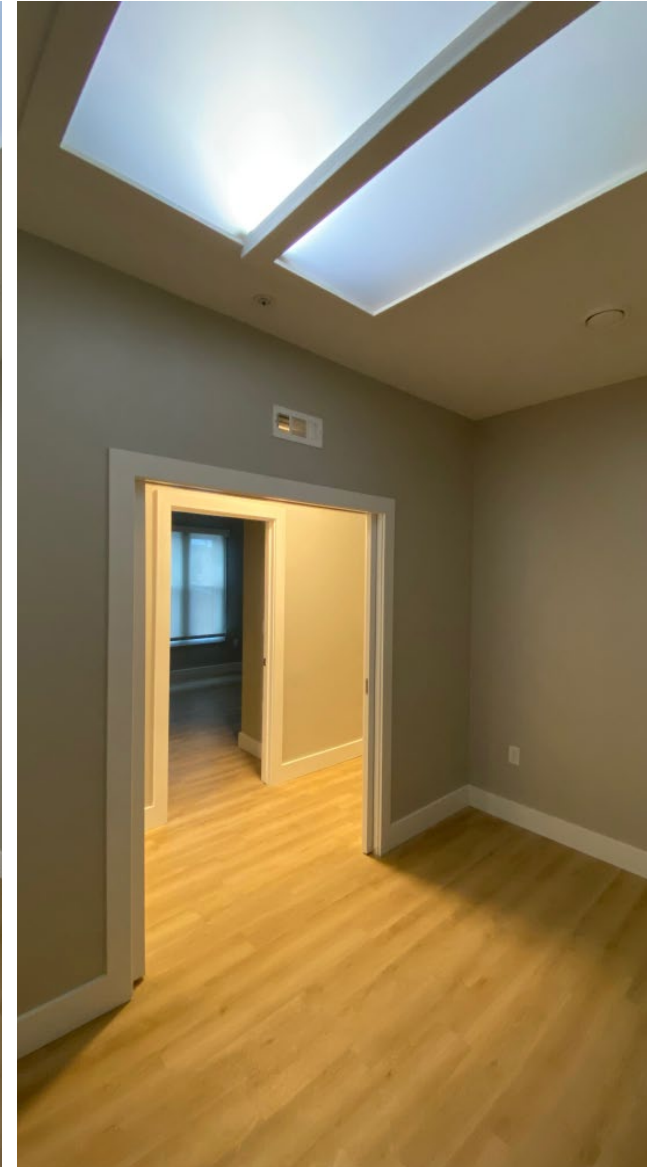
The policy of continual improvement practiced by **Blackwatch '68™** in construction and design dictates that all specifications, equipment, dimensions, layouts and prices are subject to change without notice. Square footages and dimensions are approximate and are not inclusive of terrace areas. Floor plans are provided for layout and suggest furniture placement only.

**Blackwatch '68**  
PROPERTIES  
blackwatch68.com

# 4003 N. Downer, Unit A - South Corner

1,500 GSF

2 Bedroom, 2 Bathroom + Office



The policy of continual improvement practiced by **Blackwatch '68**<sup>™</sup> in construction and design dictates that all specifications, equipment, dimensions, layouts and prices are subject to change without notice. Square footages and dimensions are approximate and are not inclusive of terrace areas. Floor plans are provided for layout and suggest furniture placement only.

**Blackwatch '68**  
PROPERTIES  
[blackwatch68.com](http://blackwatch68.com)