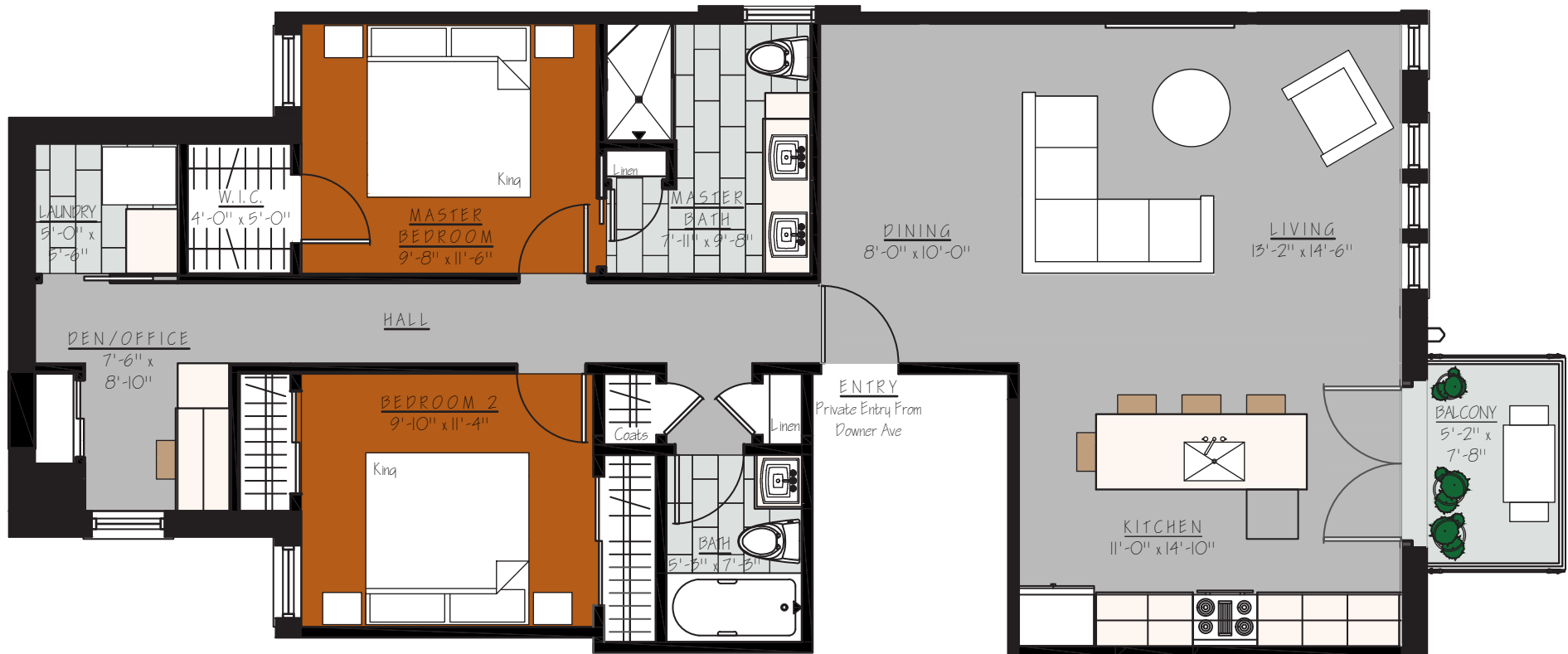


4003 N. Downer, Unit B

2 Bedroom, 2 Bathroom + Office

1,300 GSF



The policy of continual improvement practiced by **Blackwatch '68™** in construction and design dictates that all specifications, equipment, dimensions, layouts and prices are subject to change without notice. Square footages and dimensions are approximate and are not inclusive of terrace areas. Floor plans are provided for layout and suggest furniture placement only.

Blackwatch '68
PROPERTIES

blackwatch68.com

4003 N. Downer, Unit B

2 Bedroom, 2 Bathroom + Office

1,300 GSF



The policy of continual improvement practiced by **Blackwatch '68**™ in construction and design dictates that all specifications, equipment, dimensions, layouts and prices are subject to change without notice. Square footages and dimensions are approximate and are not inclusive of terrace areas. Floor plans are provided for layout and suggest furniture placement only.

Blackwatch '68
PROPERTIES
blackwatch68.com

4003 N. Downer, Unit B

2 Bedroom, 2 Bathroom + Office

1,300 GSF



The policy of continual improvement practiced by **Blackwatch '68™** in construction and design dictates that all specifications, equipment, dimensions, layouts and prices are subject to change without notice. Square footages and dimensions are approximate and are not inclusive of terrace areas. Floor plans are provided for layout and suggest furniture placement only.

Blackwatch '68
PROPERTIES
blackwatch68.com