

Prime Shorewood Hayek Storefronts

4001 North Downer • Call or text (414) 248-7769



"Blackwatch '68 hit it out of the park with the Hayek apartments. They are awesome!"

-Dr. Michael G. (Froedert physician)



FIRST FLOOR

Highly established corner location perfect for any business, immediate customers for beloved Hayek building!

4000 SF basement with direct stairwell access from each commercial space.

10-car parking lot

12,000 SF fully sprinklered property

3 large boutique apartments - 100% occupied

All new black storefronts, exposed cream city brick, high ceilings, tons of natural light, character everywhere!

Cafe/restaurant, wellness, retail

Atwater Park & Lakefront are just steps away

Corner plaza feel! Outdoor seating on Downer!

Commercial Space



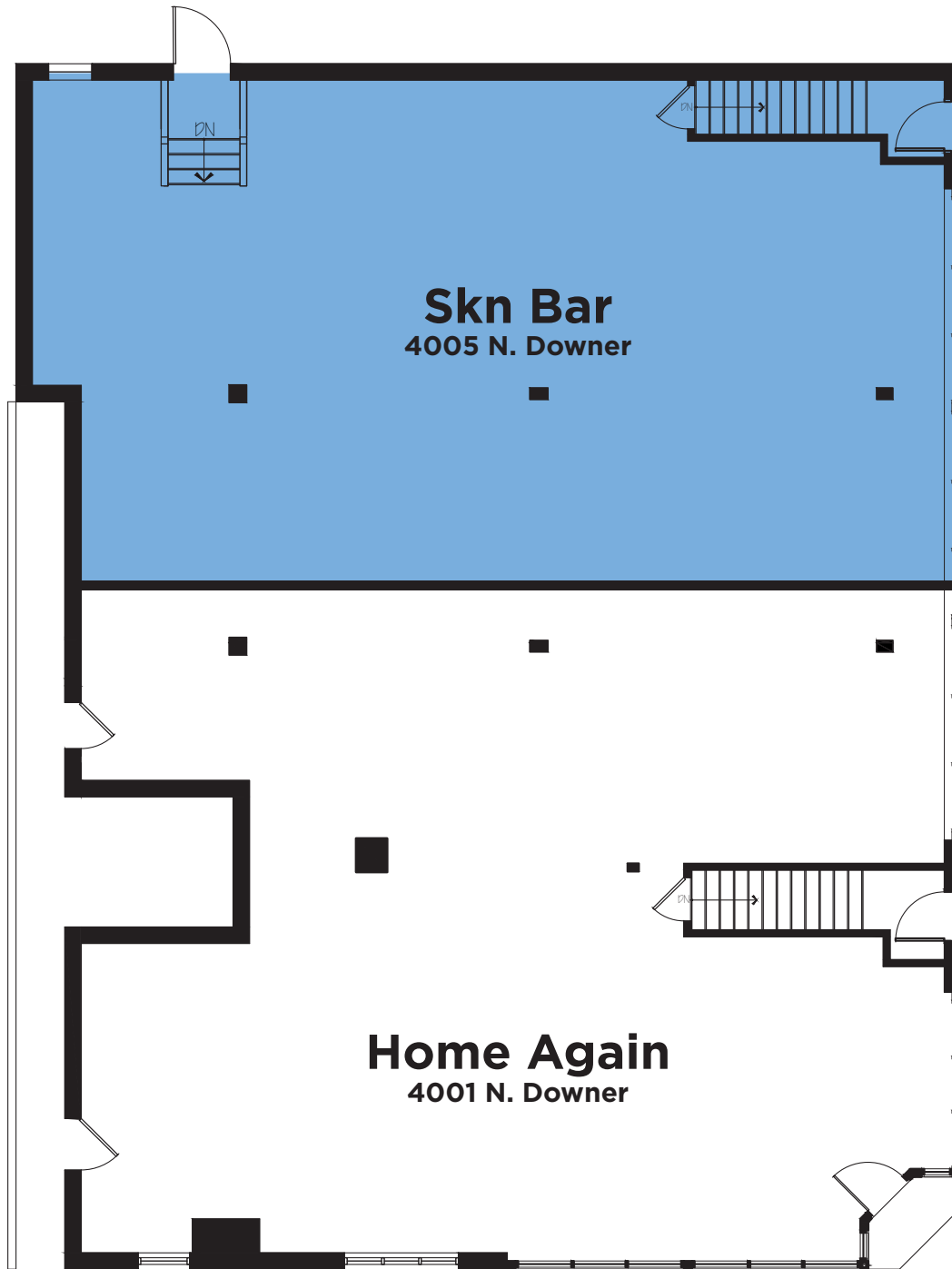
A mere three blocks from Lake Michigan and nestled into the corner of East Capital Drive and North Downer Ave, our Shorewood, WI location is filled with history. With a revamped exterior, stunning bamboo interior, and gorgeous natural light, this 100 year old building is completely rejuvenated!

-Skn Bar RX website

The policy of continual improvement practiced by **Blackwatch '68™** in construction and design dictates that all specifications, equipment, dimensions, layouts and prices are subject to change without notice. Square footages and dimensions are approximate and are not inclusive of terrace areas. Floor plans are provided for layout and suggest furniture placement only.

Blackwatch '68
PROPERTIES
blackwatch68.com

Commercial Space



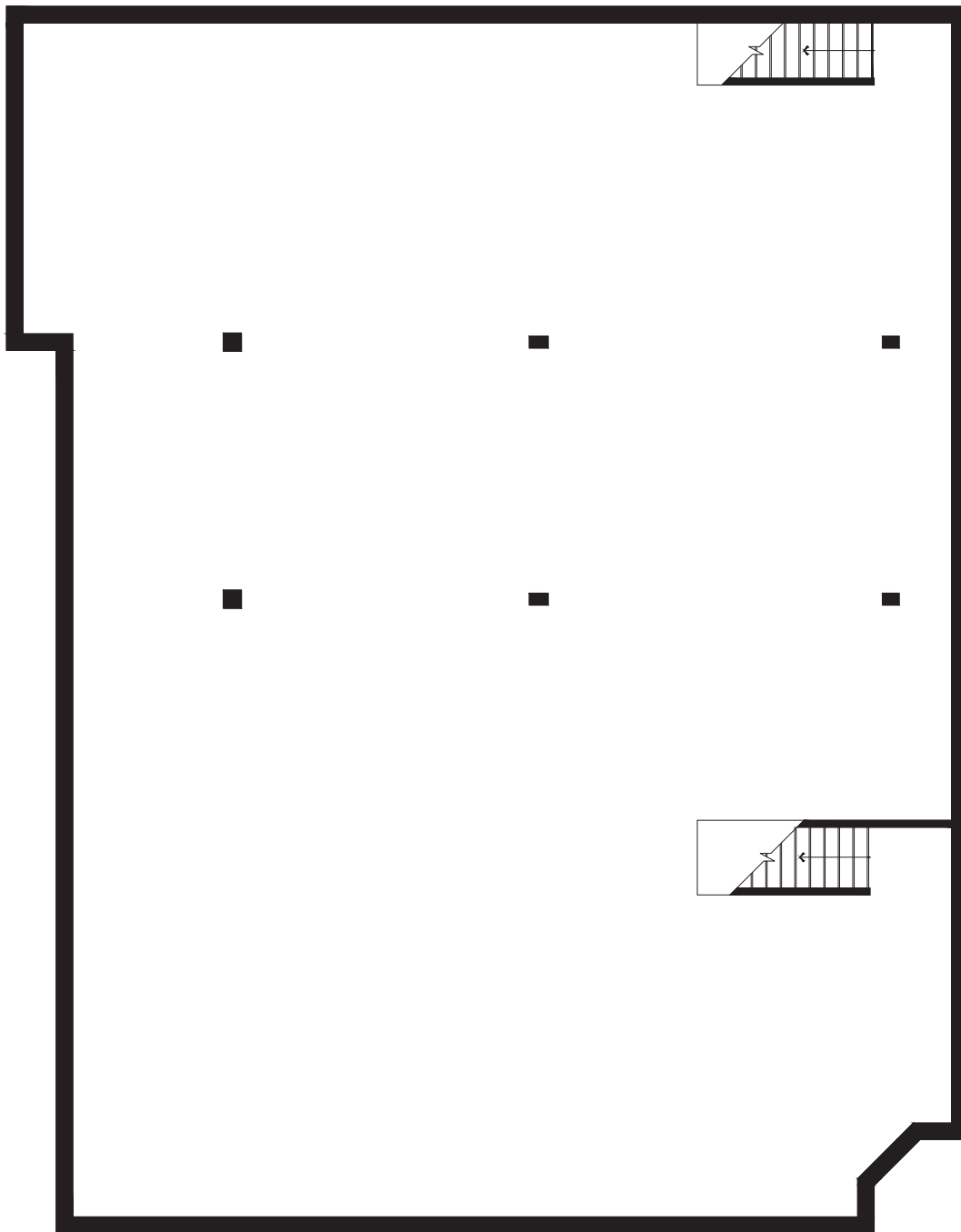
FIRST FLOOR

The policy of continual improvement practiced by **Blackwatch '68™** in construction and design dictates that all specifications, equipment, dimensions, layouts and prices are subject to change without notice. Square footages and dimensions are approximate and are not inclusive of terrace areas. Floor plans are provided for layout and suggest furniture placement only.

Blackwatch '68
PROPERTIES

blackwatch68.com

Commercial Space



BASEMENT

4000 SF with direct stairwell access from each commercial space above

The policy of continual improvement practiced by **Blackwatch '68**TM in construction and design dictates that all specifications, equipment, dimensions, layouts and prices are subject to change without notice. Square footages and dimensions are approximate and are not inclusive of terrace areas. Floor plans are provided for layout and suggest furniture placement only.